

# The Tower

September 2024



## First Presbyterian Church

340 South 5th Avenue  
Saint Cloud, MN 56301  
Telephone: 320-251-8277  
[www.fpcstcloud.org](http://www.fpcstcloud.org)

### 2024 Annual Fish Fry

Please put Wednesday, September 25th on your calendar for the annual Fish Fry - serving will start around 5:00 pm. Sign up in the entryway to bring a side dish or dessert, if you wish. College students eat free and freewill donations will be accepted.

Where does the fish come from? You! Who? You! Many of you fish throughout the summer saving up some for our fish fry. Thank you for your time and generosity!



### Outdoor Concert (Sept. 6)

Join us for an outdoor concert in the parking lot. The Tannahill Weavers, from Scotland, will be performing. The concert is free but a freewill offering will be made to Terebinth Refuge.

Food trucks start serving around 5:00 pm with the concert starting around 6:00 pm. Bring a lawn chair and some folk to attend with you.



### Church Staff

REV. DARIN SEAMAN  
Pastor

BECKY STUDNISKI  
Administrative  
Assistant

JULLIAN EUTENEUER  
Music Director

BRAD JOHNSON  
Facilities Coordinator

PATTY SCOTT  
Custodian

ISAAC PENTZ  
Assistant Custodian

## Pastor's Reflections

I've been thinking a bit about hospitality this summer. One member of my Rotary Club is moving to be closer to his family. He is retired and has served in Rotary for more than 50 years.

What I remember most about him was how he welcomed me when I was a new member. He greeted me every week like I was part of his family. I will miss his leadership in our organization.

I hope we as the church continue to strive to be a place of welcome and hospitality when people cross through our doors.

At our Session meeting in August we discussed hospitality in the overflow section. We can no longer say, "just move up to the front." Often, guests will sit in the overflow section upon their first visit to our church for a variety of reasons. Some simply want to check out the church from the back. Others do not want extra attention given to them upon their first or second visits. There may be a myriad reasons why some prefer to sit in the overflow section.

Are we demonstrating hospitality in that part of our church? Do we welcome those who desire to utilize that part of our sanctuary? Can people hear well from that section? Do our guests see the screens well from that location?

Speaking of hospitality, we now offer name tags for everyone to use in worship. No, you do not have to wear one. We are simply provide them in the pew racks for those of us who want to use them, to help those of us that forget a name everyone once in awhile and want to make a better connection with folk.

The grace and peace of Christ be with you.




**Rev. Darin Seaman**

### September Sermon Titles

**Sept. 1**  
"Movement 4 - Response"  
1 Corinthians 11:17-34

**Sept. 8**  
New Sermon Series  
James: "Active Faith"  
James 1:17-27

**Sept. 15**  
James: "Faith By Itself. . ."  
James 2:1-17

**Sept. 22**  
James: "Taming the  
Tongue"  
James 3:1-12

**Sept. 29**  
James: A Good Life  
James 3:13-4:3

## CALLING ALL MUSICIANS!

Music programming will resume at FPC on Wed., Sept. 18th!

### **Chancel Choir** 6-6:45 pm

A choir of singers made up of four sections: soprano, alto, tenor, bass. This group typically sings once a month and for special services.

### **Bell Choir** 7-7:45 pm

A group made up of experienced and new bell ringers! I am more than happy to help teach and guide all who are interested! Even if you've never played any instrument, come and give it a try!



**Jullian Euteneuer**

### **Crusade Choir** - Rehearsals to be announced mid September!

A group of singers from many different churches in the area. The group sings an amazing narrated Cantata, including a children's program that tells the story of the birth of Jesus. In this group you will experience a live, fully orchestrated accompaniment which includes: piano, drums, violin, bass, cello, viola and many other instruments. Members all receive their vocal section on a cd to practice additionally on their own between regular rehearsals. There are also sectionals for each section, and private instruction as needed! This group rehearses once a week, and that will be announced soon! The three day cantata Concert is scheduled for this December 13,14,15 this year!

### **Men's "Closer Walk"** group Thursdays 2-3:30

A group of men singing 2-4 part songs! This group has expanded to an infinite number of men! Songs range from old time gospel, to new contemporary pieces. This group typically sings once a month, depending on member schedules. As this group expands, I will be changing rehearsal time to accommodate those members who are still working.

### **Special Music Musicians** - flexible schedule

This is for anyone who would like to play an instrument or sing! This can be as a solo, duet, or small group musician. There is no commitment to rehearse weekly, and rehearsals are up to each individual musician.

### **Children's Music** programming

Children's handbells will once again meet on Sundays right before Sunday School, around 9 am in the Campbell room or Sanctuary if it is a day the bells will play during worship. No prior music training is required. Children's Praise Group is a new group that will be starting soon! This group will explore Ukulele, and many percussion instruments. Rehearsal Days and times will be announced soon!

### **Women's Songbird** Group

A group of 9 plus women singing a variety of songs as the group is available. Rehearsals will be announced as soon as I have 9 + members signed up! I would like to see this group sing once a month.



## Clearwater Forest Summer Camp “Linked by Love”

1 Corinthians 13:4-7

Love is patient, love is kind. It does not envy, it does not boast, it is not proud. <sup>5</sup> It does not dishonor others, it is not self-seeking, it is not easily angered, it keeps no record of wrongs. <sup>6</sup> Love does not delight in evil but rejoices with the truth. <sup>7</sup> It always protects, always trusts, always hopes, always perseveres.



First time campers!



Last year for Gavin (left)



Ariel: “I love coming back every year and meeting new people and seeing all my favorite counselors and camp friends. Evening worship, paddle boarding and night games were super fun!”

Sara: “Camp was super fun and I got to see all my friends! We learned about God during worship.”

**Thank you for your prayers  
and financial support  
through donations and fundraisers!!!**

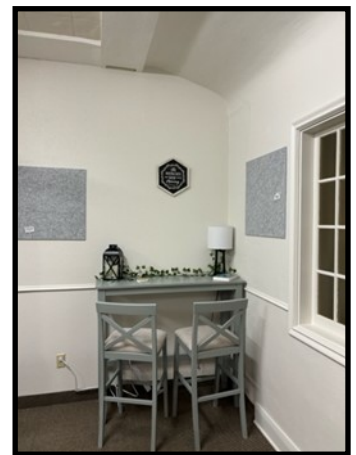
**Into the  
Wilderness**  
**Clearwater Forest Fall Camp 2024**

*Who:* Middle School and Senior High campers  
*When:* Oct. 25-27  
*Cost:* \$175/camper or adult chaperone  
*Theme:* Into the Wilderness - drawing inspiration from biblical journeys and trials in the wilderness, highlighting perseverance and reliance on God.  
**Registration will open August 25th!**

## Come check out our YOUTH/COLLEGE students' space!!!

Last year, we were fortunate to receive a \$6,500 grant from the Mission Redevelopment Committee of First Presbyterian Church in Madelia, MN. We are especially grateful to John Bowden for his efforts in writing the successful application!

With these funds, we've transformed our youth space into a warm and inviting area where our young members can gather for Bible study or simply relax. If you notice any new youth or college students at church, please encourage them to check out this space, share a conversation, get to know them, or enjoy a cup of coffee!



### September G.I.F.T. (Generations In Faith Together)

Join us as we kick off the 2024-25 G.I.F.T. Sunday season with a special **YOGA** session (by Laurel Leaf Yoga, Retreats, & Wellness), to center our minds and bodies, preparing us to listen to God with open heart and minds and have fun.

**Bring your family and/or friend! This is for ALL ages!**

**Sunday, September 15th**

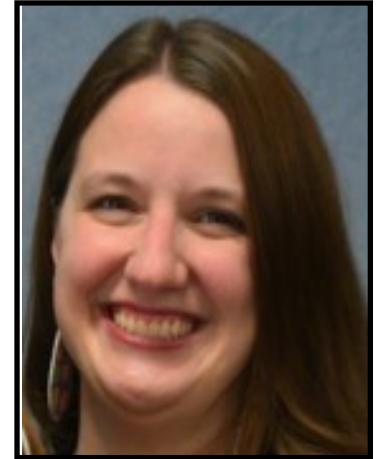
**11:15 a.m. -12:15 p.m.**

**Please bring a mat** and extra mat if possible



## Who's Who in the Pew

### Katie Pennertz



#### Tell us about yourself.

I am the second oldest of 4 kids – I have an older brother, and a younger sister and brother. I was born in Brainerd, MN and my family moved to Iowa when I was 9, due to my dad's job. We moved to a very small town (Lawton) so it was very hard to find my place coming in as a new student. I did have a typical childhood – close friends, good family, and school activities that kept me busy. I always knew I wanted to get back to my Minnesota roots though, so I attended college at Southwest MN State University in Marshall, MN. I graduated in 2012 and received my BS in Finance. After graduating, I started working as a teller at a small local bank in Litchfield, MN. Once David and I moved to St. Augusta, MN I started working at Magnifi Financial. I have held a couple different positions there, but currently work as a Payment Specialist.

#### How long have you been attending FPC? Before that, where have you attended?

We first visited FPC in late 2019. I was pregnant with Gwendolyn and we were looking for a closer church with a good youth presence. We were able to attend twice before Covid hit and we watched FPC Litchfield online for the next 3+ years. We picked back up our search for a church in 2023, and had the same friendly atmosphere that we experienced before. We became regulars and David became a member in January 2024. Prior to FPC St Cloud, we attended FPC Litchfield where David's dad was the pastor.

#### What is a Bible verse or verses that hold deep meaning for you?

Jeremiah 29:11 – For I know the plans I have for you declares the Lord, plans to prosper you and not to harm you, plans to give you hope and a future. After struggling with infertility for 6 years, this verse quickly became meaningful and something I could turn to.

**Share anything you wish about your family/children.**

David and I met in college, I was a freshman and he was a senior. It was finals week and he had finished his student teaching, but he had stayed around to hang out with friends one more week before starting in the “real world”. We started dating that summer, and had a long-distance relationship. We got married in April 2012 in Marshall, MN. I still had 2 weeks left of college, so we spent our first 2 weeks of marriage separated as well. We lived in Litchfield, MN for 5 years before moving to St. Augusta. After getting married, we had planned to start having kids right away; however, that was not God’s plan. We tried for 6 years, saw many doctors, and tried many different things to get pregnant. Our prayers were finally answered when we learned we were pregnant in early 2018. We welcomed Theodore in October 2018. We loved being parents and he was the easiest baby. In summer 2019 we were surprised to learn we were pregnant again! Gwendolyn completed our family in February 2020. We truly enjoy watching the kids grow up and be as close as they are!

**What are favorite pastimes/hobbies of yours?**

I would say gardening is my favorite hobby. We have a vegetable garden we started a few years ago and it’s where I spend a lot of my summer. I love watching everything grow and canning a lot of what is produced. I also love to sew and bake, however haven’t found much time for these activities since having kids. The kids are starting to enjoy cooking and baking, so I am slowly getting back into that as more of a family hobby.

**What are some small things that brighten your day?**

My kids – they can also quickly turn my day though. I love listening to my kids carry on full conversations with each other. Making sure they get hugs and cuddles every night before bed.

**Given the choice of anyone in the world past or present, whom would you enjoy as a dinner guest and why?**

My grandparents. My grandparents knew of our infertility struggles, and were probably our biggest supporters with prayer. My grandpa never got to meet my kids, and my grandma had such a special bond with Theodore. I would love to sit down with them, enjoy my grandma’s cooking and just enjoy watching them interact with my kids.



## A Brief History of FPC Part III

Mike Rutter



“Granite! Granite? You can't expect the church to pay for granite.”

“These five lots have already cost a thousand dollars each!” It is just possible comments such as this were heard from several members of the growing congregation. However, other members, employed in the quarry industry, had voiced an idea to use granite in the construction of this new edifice: a grand building dedicated to God. According to news reports, the building committee had originally agreed to a \$35,000 limit, however, a year later, that figure had doubled.

Somehow, by Divine Providence perhaps, Dr. Campbell secured an arrangement with the granite company to get the needed supply free for the hauling.' (From 'A History of the First Presbyterian Church' booklet by John J. Dominik)

The cornerstone, containing a small copper box with issues of both local newspapers, was laid on Sunday, May 20<sup>th</sup>, 1917, and the new church was dedicated a mere nine months later on Sunday, February 24<sup>th</sup>, 1918. The crowd was overflowing, as hundreds of members from other area churches joined in the celebration. By this point, the Reverend Doctor had been in service for over 50 years, and had baptized some that had now married and had their own children baptized! Amazing.

A quick check through the records area did not reveal building costs or square footage, however the interior space is roughly 50 paces by 20 paces: 140' X 50' or 7,000 sq ft (prior to the educational addition in 1957). The thick exterior columns, easily seen from the west side parking area, are 12' center to center, and reflect the interior ceiling design. The \$70,000 construction cost, adjusted for basic inflation, is in the two-million dollar range, although one can only imagine installing real oak alone would push things way past that price! The heavy granite walls, massive wooden ceiling beams, and thick doors were perhaps a best hope against tornadoes, however the roofing, originally red Spanish tile, was replaced with more suitable (and quieter!) material after hail-storm damage (1954). And while the bell tower was built, it was reserved for it's first use: ringing in the end of World War I.





The Chancel stained-glass window, the figure of Christ, along with the five windows on the east side of the church with the Old Testament figures of Daniel, Joshua, Hosea, Jeremiah, and Isaiah, were copied from the John Singer Sargent murals featured in the Boston Public Library. It wasn't until later, 1941, that the five windows depicting Matthew, Mark, Luke, and John along with the Apostle Paul, were installed. If you take the time to look and read, there is a small plaque or sign by the windows with a dedication. (Some feature the names in the lower-side glass panels.) And, if you happen to have the FPC History booklet, it lists several symbols incorporated into the designs, such as Scottish thistle, mallet & chisel, three feathers, a Dutch windmill, a fish, a sunflower, ivy, chalice, and harps. These pay tribute to the ancestry of those who dedicated gift & service to the church. (By the way, our wonderful stained-glass windows are in need of re-sealing, and there is a current fund drive for this effort. Replacement cost in itself would probably be several million dollars – if you could locate the appropriate craftspeople!) These windows are 10' across, with the Chancel window appearing to be around 12' high at the pinnacle. There are 18 numbered rows of solid wooden pews in the main nave counting the first open row (chairs), and 7 in the overflow. By the way, the overflow pews feature small dedication plaques, with birthed years from 1843! There is even one (dated 1960) from the Jewish Community of St. Cloud. And if you haven't read it – please take the time to view the dedication plaque in the east (4<sup>th</sup> Avenue) entrance area.

After 57 years of service, Reverend Elgy V. Campbell retired in 1922. He passed away in 1929 at the age of 93, with his wife Mary Shane Campell following two years later. Considered the Pastor of St. Cloud, Reverend Campbell had received 801 members, performed 548 baptisms, 698 weddings, and 757 funerals during his time. He was also convenor (facilitator) for at least 12 other area churches; locations such as Willmar, Litchfield, Royalton, and New London, when the Presbytery was organized into 3 units (1892).

Rev. Harold Baldwin, who has become the church's 2<sup>nd</sup> pastor, ends up taking a reduced salary due to the Depression, and serves until 1937 when he is appointed executive secretary of the Synod Lakes and Prairies. Rev. William Slosser takes over the duties, and introduces the Hymn of the Month to bring new music into the church. He also organizes a Couples Club, which in turn becomes the Duoterians.

(NOTE: We are fortunate to have the handwritten accounts by Glanville Smith. Despite the seriousness of WWI, Prohibition, the Great Depression, and a looming threat of WWII, the accounts do lighten things up at times, with his details of personalities and incidences. Evidently, there existed several pranksters throughout the congregation – one incident involved the swapping of meat in a sandwich or two with tin jar covers!)

## Service Group – September



### Chair - Lori Smith

Carol Brink	Kadoon Kenyon
Dan and Tami Calhoun	Tim and Natalie Matthewson
Don and Arlene Casey	Stephanie Randolph
Betty Duininck	Mike and Kim Tollefson
Jerry and Betsy Hayenga	Gene and Marilyn Williamson

## SUNDAY WORSHIP SERVERS SCHEDULE

Date	Worship Leader	Ushers	Greeter
Sept 1	Dick Andzenge	Shauna Seaman/Lori Smith	Kari Ahles
Sept 8	Michelle Chan	Bert & Jan East	Randy/Kathy Arnold
Sept 15	Youth	Dan Owen/Mary Lease	Jan Larson/Lois Buchin
Sept 22	Rachel Buchin	Ryne Pentz/Duane Scherbing	Ken & Norine Schmitt
Sept 29	Nancy Horn	Mike Tollefson/Nancy Coleman	Don & Jan Watkins
Oct 6	Ryne Pentz	Gail Aalderks/Mike Rutter	Linda Bettison
Oct 13	John Pike	Randy/Kathy Arnold	John Bowden
Oct 20	Rhonda Siltman	Phil/Jeannie Chu	Bert & Jan East
Oct 27	Shauna Seaman	Ron/Karen Larson	Karen Larson

As a reminder, if you are unable to serve on your particular Sunday, please switch with someone and notify the office staff of the change.

Jackie Benn	09/01	Ruby Olson	09/17
Mary Lease	09/02	Betty Duininck	09/18
Autin Tenter	09/04	Sandy Johnson	09/19
Lynn Rae Olson	09/05	Barbara Krmpotich	09/19
Adella Espelien	09/08	Patty Scott	09/20
Larry Olson	09/08	Curtis Wood	09/22
Deana Atkinson	09/09	Connie Sandmann	09/25
Janice Saliars	09/10	Phil Chu	09/27
Joseph Jacobs	09/11	Ken Schmitt	09/27
Katrina Johnson	09/13	Ian Rutter	09/28
Bill Ferkinhoff	09/15	Aki Rebeck	09/29
Stephanie Randolph	09/16	Nancy Horn	09/30
Pat Naysmith	09/17	Kim Tollefson	09/30



## Finances

Thank you for your generous donations. July was a financially strong month for our church. A word of caution, if we had all of our budgeted positions filled, working at budgeted hours, we would be close to breakeven.



The good news is that we have been able to complete our roof project over the education wing and it has been all paid.

Our project of “Preserving Our Heritage – Sanctuary Windows” is proceeding quite nicely. The total cost is expected to be \$59,400. We have donations of \$27,000. Six of the eleven windows have been complete.

Again thank you to all; Grace and Peace to you through Christ Jesus our Lord.

Tom Horn, Finance

July Contributions	\$55,810
July Expenses	\$47,895
Monthly (over/under)	\$7,914
Year to Date (over/under)	\$43,797

## VREC Potluck

Thank you to our Deacons who helped with a potluck at the Veterans Resource & Enrichment Center in St. Cloud earlier this summer. It was a resounding success! All of the leftovers were bagged and sent home with veterans in need. For more info, about this ministry visit [www.vrecmn.com](http://www.vrecmn.com)



**First Presbyterian Church**  
340 South 5th Avenue  
Saint Cloud, MN 56301  
Telephone: 320-251-8277  
e-mail: admasst@fpcstcloud.org  
web site: www.fpcstcloud.org

Non-Profit Organization  
U.S. Postage Paid  
PERMIT NO. 311  
Saint Cloud, MN  
56301

**Our Mission Statement**

*"Bringing the Living Hope of  
the Gospel to the World by  
Knowing and Serving Jesus  
Christ"*

**Our Vision Statement**

*"The Kingdom of God made  
known one sacred space at a  
time"*

**Office Hours**

**Monday - Thursday**

**8:00 a.m. - 3:00 p.m.**

**FIRST PRESBYTERIAN  
CHURCH  
BIBLE STUDIES**

**Tuesday** 9:00 a.m.  
Men's Bible Study

**Wednesday** 9:15 a.m.  
Women's Bible Study

**Friday** 7:00 a.m.  
Men's Bible Study

**Friday** 5:30 p.m.  
Chinese Christian Fellowship in the  
Fellowship Hall  
(Bi-weekly) (September-May)

*You're invited to join a study that  
works for you!*

**SEPTEMBER 2024**

**SESSION**

Pastor Darin Seaman, Moderator  
Bobbie Lampi, Clerk

Class of 2024: Joni Karl (Fellowship), Kim Tollefson (Personnel),  
Alvin Yu, Stephanie Randolph (Youth/Family)

Class of 2025: Rhonda Siltman (Mission), Randy Hammond  
(Property), Lynn Rae Olson (Campus),  
Mark Scholer (Worship & Evangelism)

Class of 2026: Tom Horn (Finance), Marsha Elg (Worship), Bob  
Butter (Worship), Norine Schmitt (Personnel)

**DEACONS**

Class of 2024: Gary Lenzmeier, Stephanie Merrell, Randy Arnold,  
Kathy Arnold, Carol Dirks

Class of 2025: Kari Ahles, Margaret Brooks, Karen Larson,  
Julia Owen, Duane Scherbing

Class of 2026: Michael Rutter, Gail Aalderks, Audrey Taatjes,  
Paula Tift, Mary Lease